



MOJO SOLVES MILK RUNS (DEDICATED OR PRIVATE FLEET)

A common challenge in transportation today is the building and maintaining of milk runs. A milk run in this definition is one where a truck leaves a facility and makes several stops before returning to the same facility. These types of routes tend to have a fixed set of shipments like you would typically find in an inbound manufacturing scenario. Whether the carrier is a dedicated fleet or a private fleet the problem is the same.

Mojo has the capability to solve this problem quickly and efficiently. The process is different than a true execution model in that Mojo is run weekly or monthly instead of every day. Certainly Mojo must be run anytime the mix of shipments changes. (Naturally Mojo may be run anytime desired even daily.) The shipments are fed into the optimizer. In the scenario we are going to look at the pool facility is distributing pallets/containers to the different suppliers and the suppliers are shipping goods into the pool facility. The routes must be completed in a single day.

The run below shows how Mojo creates routes that start at a point and return to that point.

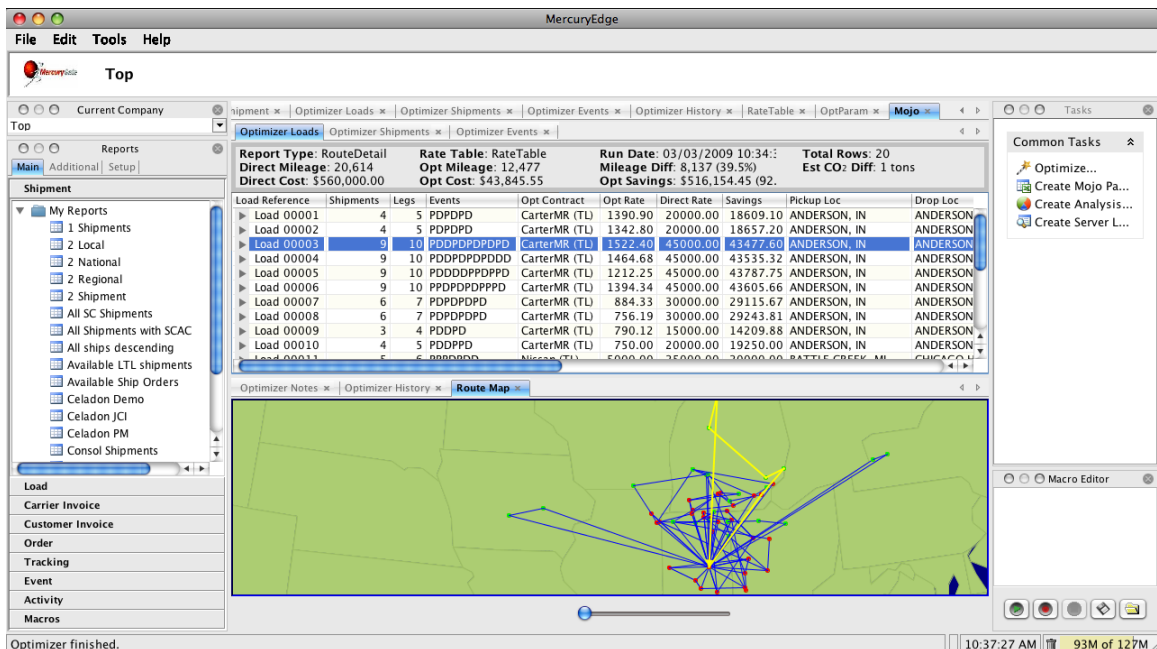


Figure 1: Mojo showing a milk run

As you can see from the highlighted route, the load that was created consists of "PDDPDPDPDP" stop sequence. Note that each drop spawns a pickup as well. The sequence of stops is as follows:

HUB, ANDERSON, IN, USA 46011 1 Pickup 0.0 2009-01-19 02:59 83, 86, 95, 111, 96
 BELLEVILLE, MI, USA 48111 2 Drop 228.0 2009-01-19 08:18 95
 MARYSVILLE, MI, USA 48040 3 Drop 306.0 2009-01-19 11:37 111
 MARYSVILLE, MI, USA 48040 4 Pickup 306.0 2009-01-19 12:22 50
 AUBURN HILLS, MI, USA 48326 5 Drop 357.0 2009-01-19 13:08 86
 AUBURN HILLS, MI, USA 48326 6 Pickup 357.0 2009-01-19 13:53 25
 CADILLAC, MI, USA 49601 7 Drop 532.0 2009-01-19 18:08 83
 CADILLAC, MI, USA 49601 8 Pickup 532.0 2009-01-19 18:53 22
 BOYNE CITY, MI, USA 49712 9 Drop 610.0 2009-01-19 21:11 96
 BOYNE CITY, MI, USA 49712 10 Pickup 610.0 2009-01-19 21:56 35
 HUB, ANDERSON, IN, USA 46011 11 Drop 998.0 2009-01-20 06:27 35, 50, 22, 25

Note that the load departs at 2:59 in the morning and returns to the facility by 6:29 the same day.

The user then typically takes the routes recommended by Mojo and creates a template in the TMS to support that run. Then as runs change, they update the templates to reflect the change of routing instructions.

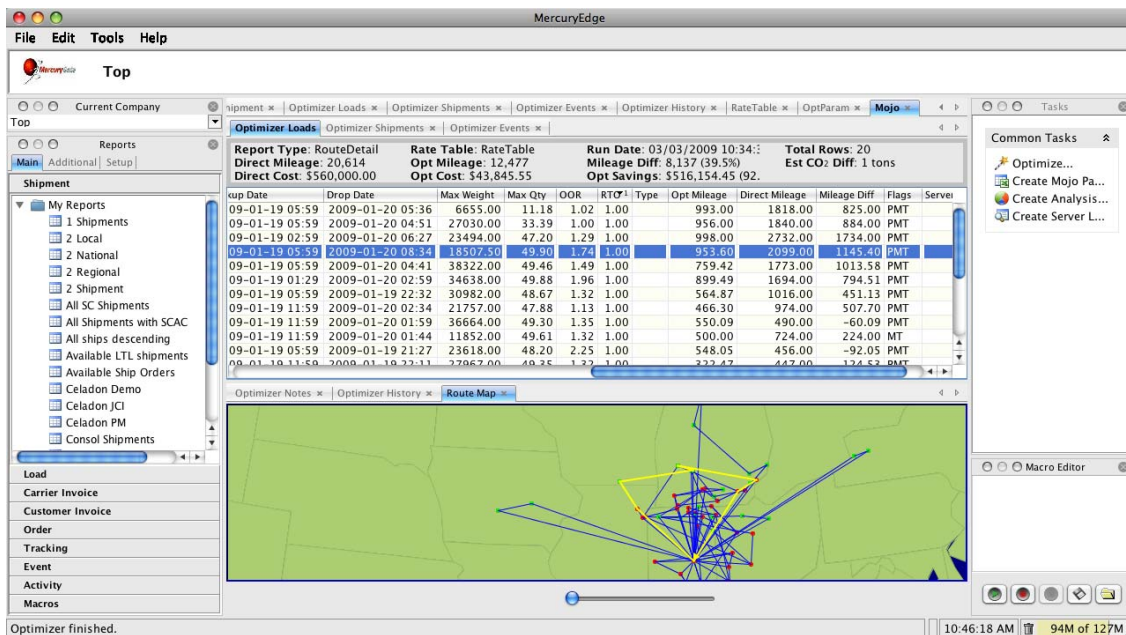


Figure 2: Mojo showing RTO column where a value of "1" indicates a complete roundtrip.

MercuryGate International, Inc
 1654 Old Apex Road
 Cary, NC 27513
 919.469.8057
 www.MercuryGate.com
 Sales@MercuryGate.com